

Stewardship. Integrity. Commitment.

THE
DOE RUN
COMPANY

160
YEARS

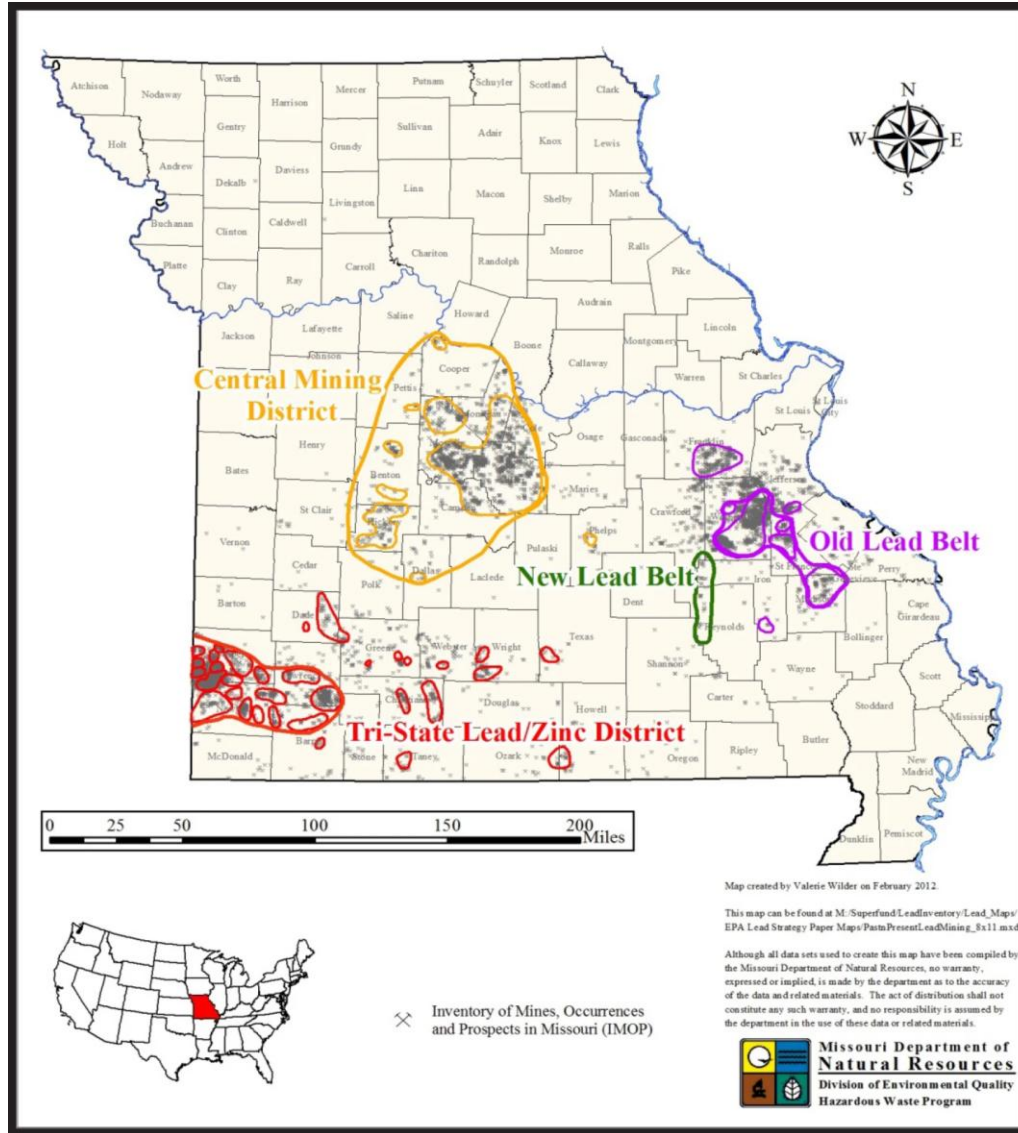
Lead (Pb) Remediation Issues

Chris Neaville
Asset Development Director

Midwest Environmental Compliance Conference
September 23, 2024



Lead (Pb) Mining Districts - Missouri



Lead Remediation “Key Points”

- >\$500M spent on lead remediation in the region by PRPs and EPA of historic mine NPL Superfund sites and surrounding residential areas in Missouri and Tri-State (Kansas, Oklahoma)
- In January 2024 EPA lowered the recommended screening level for lead in residential soil from 400 parts per million (ppm) to 200 ppm
- How will this be implemented in EPA Region 7?
 - Could have significant financial impact in this region due to historic lead mining and naturally occurring mineralization

Herculaneum Lead Smelter - Before



Herculaneum Lead Smelter - Before



Herculaneum “Post-Smelter” – Looking Northeast



Phase 1 Remediation - Port Development



Railcar Loading from Port



Port Expansion – 2nd Dock



Bulk Storage Building



Barge Loading



Rail Loading

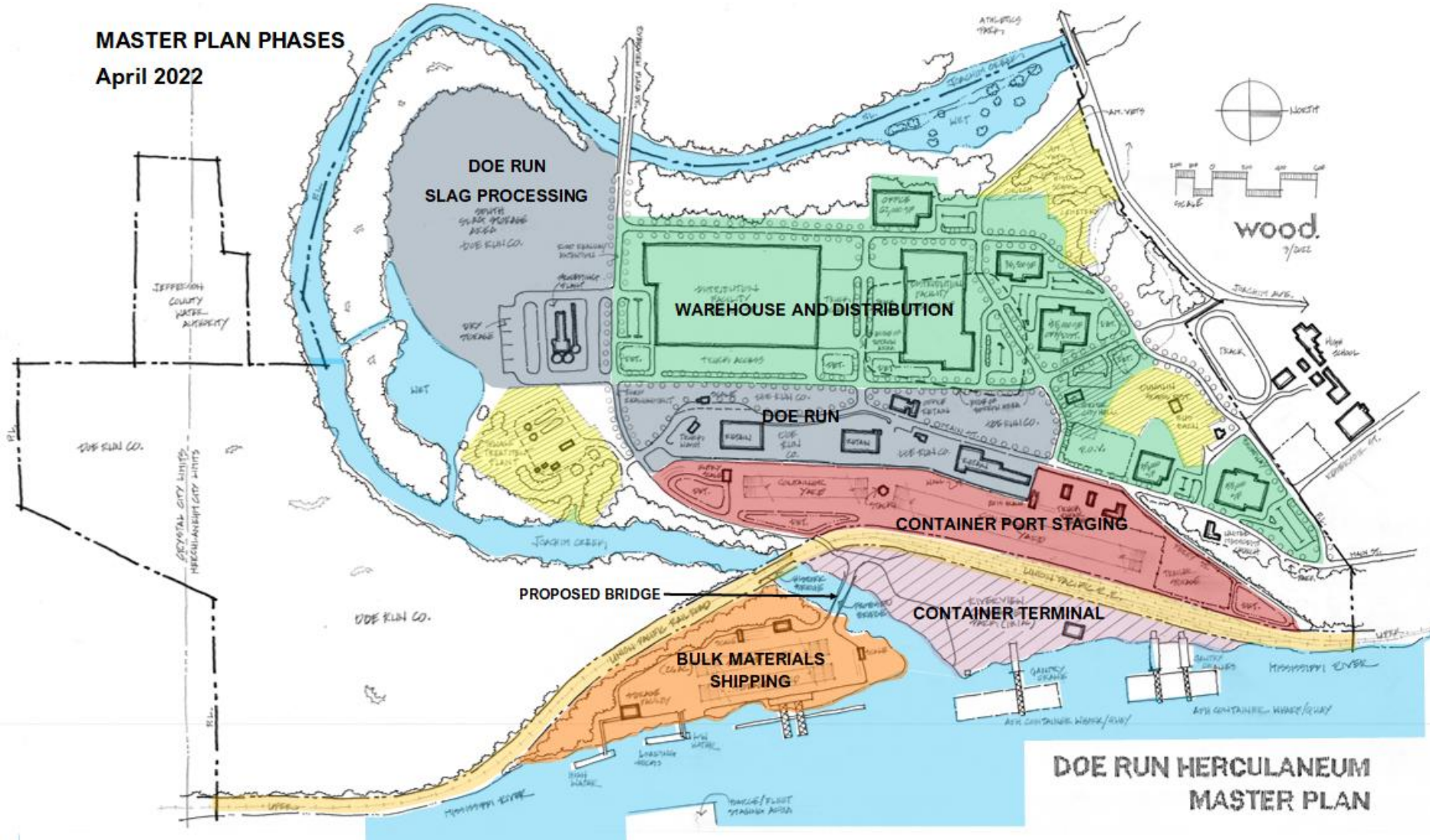


**MASTER PLAN
APRIL 2022**



**DOE RUN HERCULANEUM
MASTER PLAN**

MASTER PLAN PHASES
April 2022



**DOE RUN HERCULANEUM
MASTER PLAN**

Smelter Site – Phase 2 Capping Area

