



Region 7 Environmental Justice Update

*Amy Bhesania, EPA Region 7
Director, Environmental Justice, Community
Engagement and Environmental Review Division
bhesania.amy@epa.gov*

PRIORITIES



Embed EJ as part of all EPA work



Grants



Meaningful Engagement



Cumulative Impacts



Civil Rights

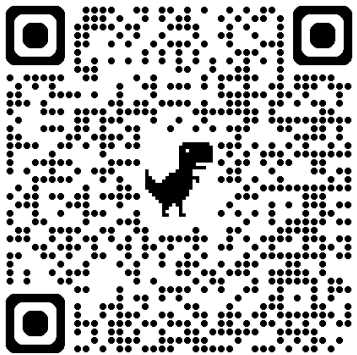
\$2 billion in Community Change Grants



**COMMUNITY
CHANGE GRANTS**
Environmental and Climate Justice
U.S. Environmental Protection Agency



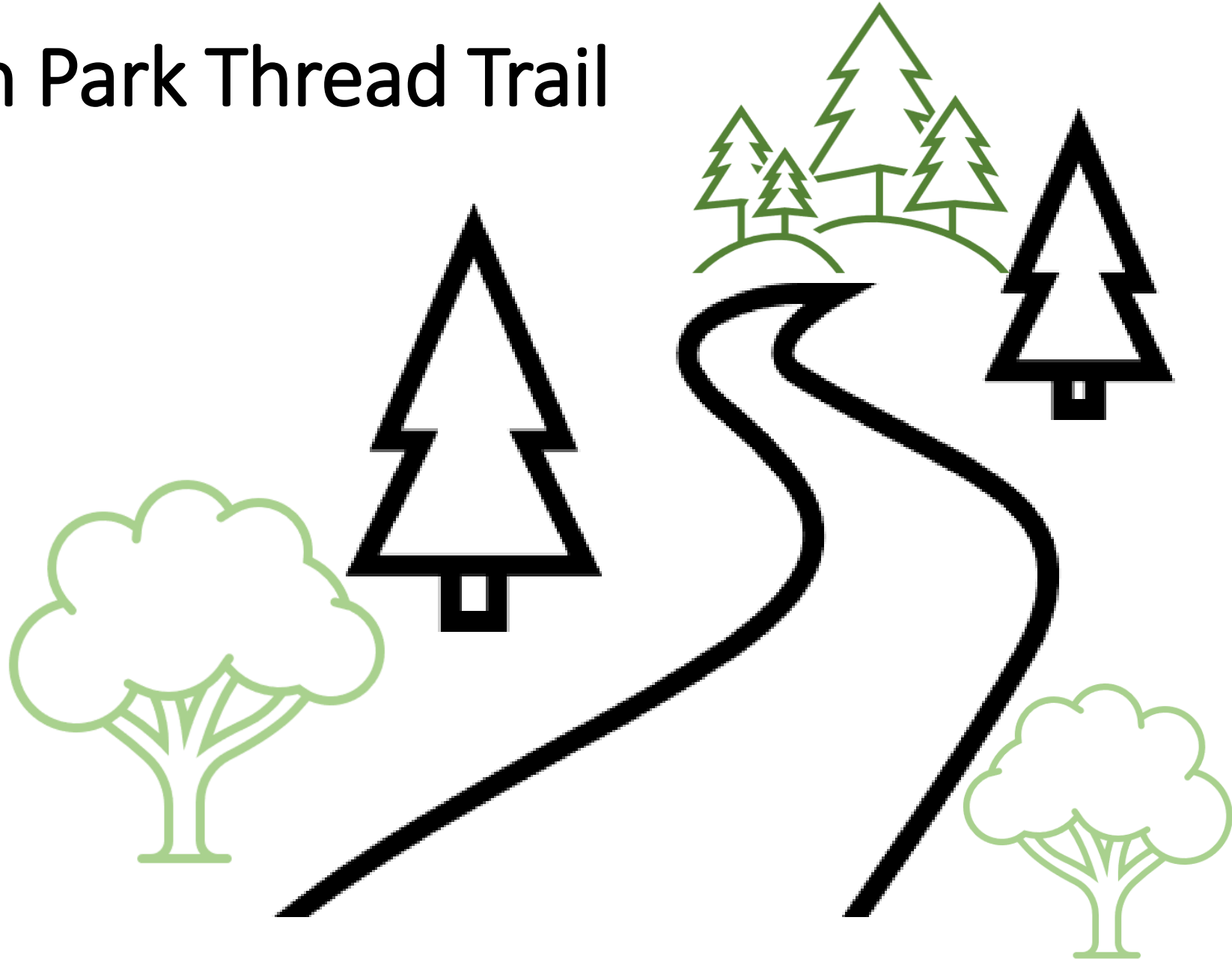
**Cultivating Healthy
Environments**
TCGM: REGION 7



\$600 million in GrantMaker Subgrants

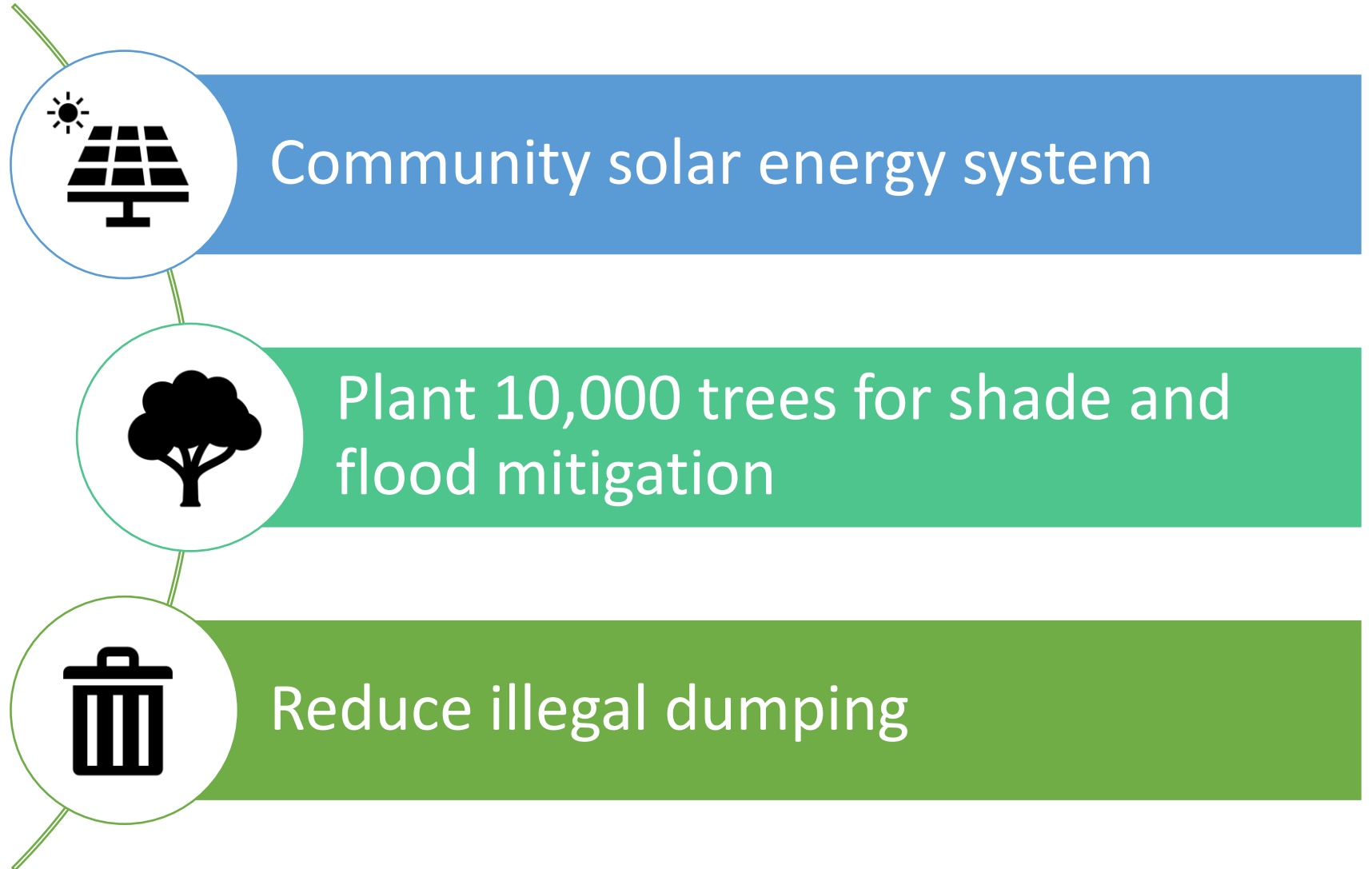
Clifton Hills Alton Park Thread Trail

- Chattanooga, Tennessee
- Develop a 2.6-mile trail
- Expand greenspace & tree canopy
- Improve stormwater & floodplain management



Vulnerable to Vibrant: Power for Change

- Houston, Texas



Improving Tribal Access to Energy Efficiency and Weatherization Infrastructure

- Work with 35 federally recognized Tribes across Wisconsin, Michigan, Minnesota

Energy Efficiency & Weatherization Upgrades in Homes

- Improve indoor air quality
- Lower energy costs

Leadership Development Training for Tribal Energy Champions

- Build capacity to access additional funding sources
- Implement projects to strengthen climate resilience and reduce pollution

Spokane Climate Resilience Project

- Spokane, Washington
- Reduce indoor air pollution and energy costs by retrofitting hundreds of homes with heat pumps and high-quality air filtration systems
- Build the capacity of five community resilience hubs by installing microgrid infrastructure
- Establish a Community Resilience Network
- Establish a fund to support community organizations' work to strengthen Spokane's climate resilience and mitigate location pollution



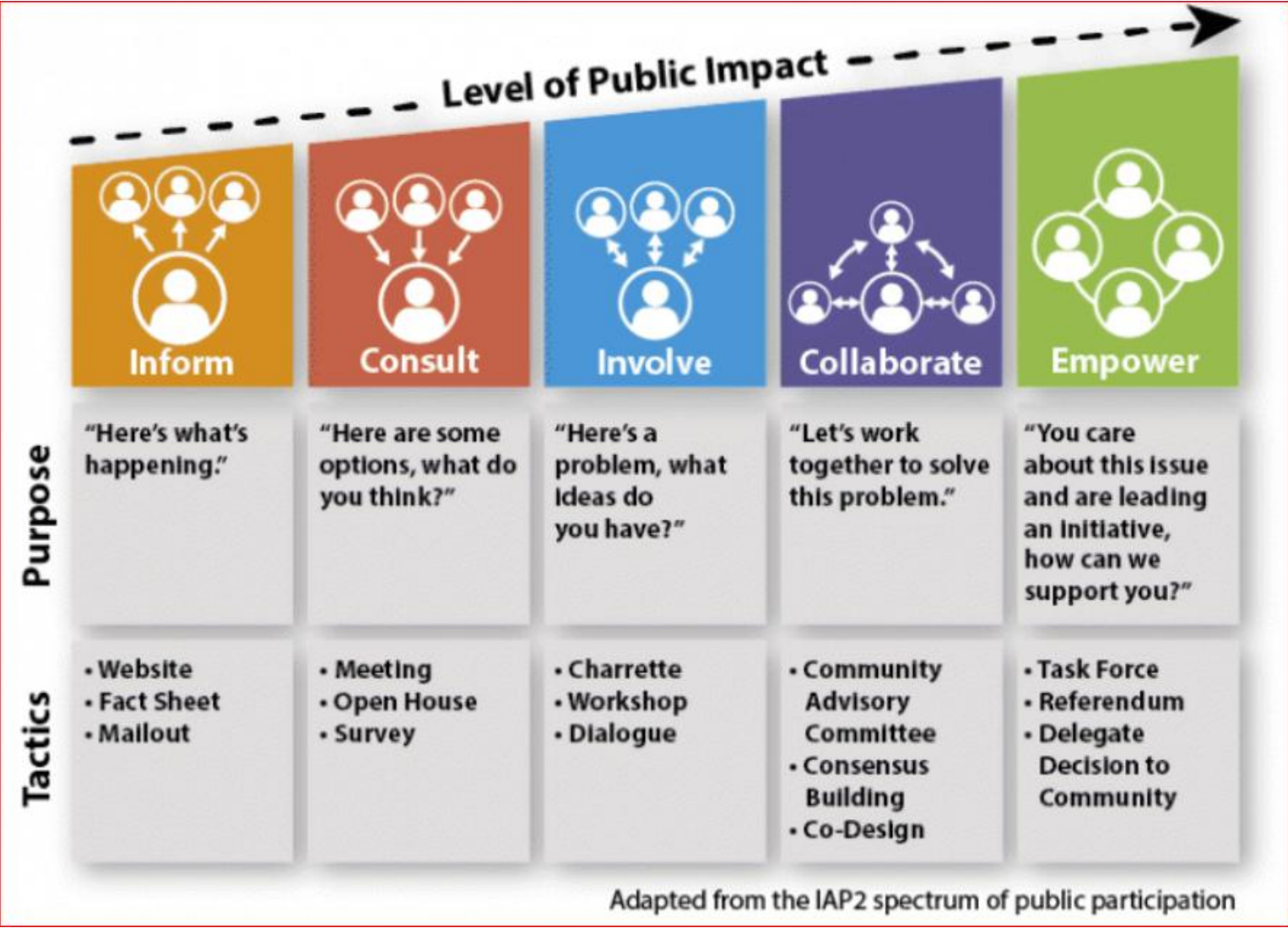
Building Democratic Systems for a Climate Resilient Cleveland

- Cleveland, Ohio
- Engage residents of eight historically disadvantaged neighborhoods in municipal decision making and planning processes related to parks and greenspaces





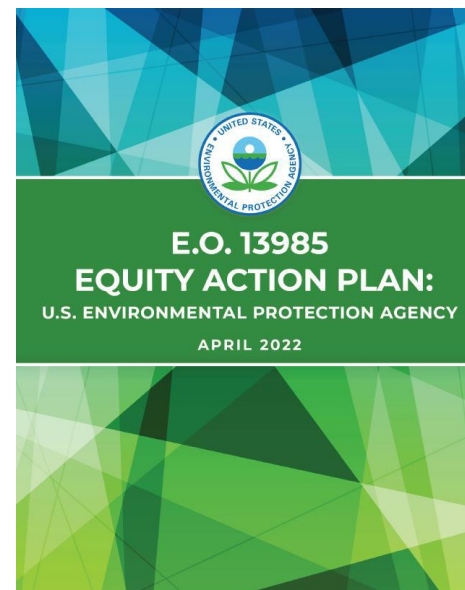
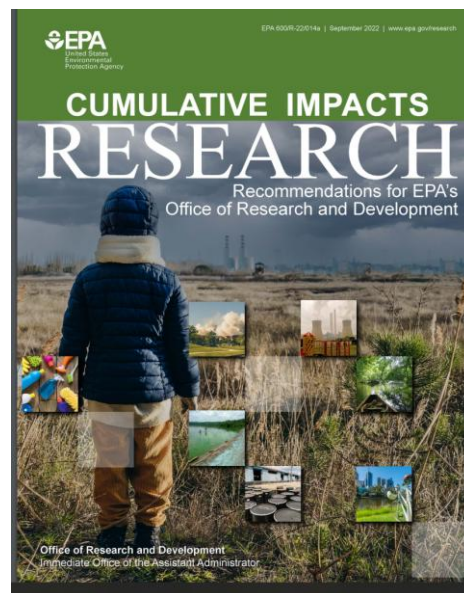
MEANINGFUL ENGAGEMENT



PUBLIC PARTICIPATION SPECTRUM

Disproportionate & Cumulative Impacts





CUMULATIVE IMPACTS



CIVIL RIGHTS

Join EPA Region 7 Community Information Guide



Join Email List



Learn More
about the guide