



# **Midwest Environmental Compliance Conference**

OVERLAND PARK CONVENTION CENTER | KANSAS

September 24-25, 2024



Spencer **Fane**



AJ Ferate

Paul Jacobson

Andrew Brought

Shelly Dalrymple

[ajferate@spencerfane.com](mailto:ajferate@spencerfane.com)

[pjacobson@spencerfane.com](mailto:pjacobson@spencerfane.com)

[abrought@spencerfane.com](mailto:abrought@spencerfane.com)

[sdalrymple@spencerfane.com](mailto:sdalrymple@spencerfane.com)



SpencerFane

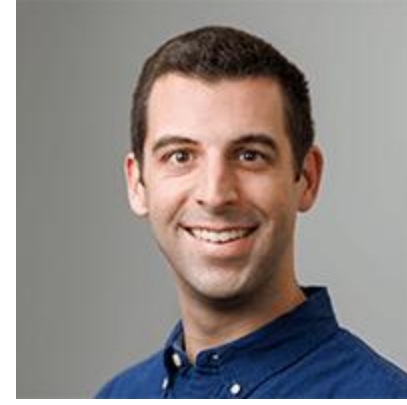




Andrea Collier  
Ed Galbraith  
Adam Nanney  
Jennifer Webb

[acollier@barr.com](mailto:acollier@barr.com)  
[egalbraith@barr.com](mailto:egalbraith@barr.com)  
[ananney@barr.com](mailto:ananney@barr.com)  
[jwebb@barr.com](mailto:jwebb@barr.com)





Allison Pearson  
Rob Morrison  
Logan Cole

APearson@barr.com  
RMorrison@barr.com  
lcole@barr.com





**SHOOK**  
HARDY & BACON



Joe Zaleski

[jzaleski@shb.com](mailto:jzaleski@shb.com)

Tom Grever

[TGREVER@shb.com](mailto:TGREVER@shb.com)

Jennifer Hackman

[jhackman@shb.com](mailto:jhackman@shb.com)

Adam Miller

[amiller@shb.com](mailto:amiller@shb.com)

SHOOK  
HARDY & BACON



STINSON

Wi-Fi Password: **StinsonLaw**



Kyle Foote

[kyle.foote@stinson.com](mailto:kyle.foote@stinson.com)

Kristen Ellis Johnson

[kristen.johnson@stinson.com](mailto:kristen.johnson@stinson.com)

STINSON



Claire Williams

[claire.williams@stinson.com](mailto:claire.williams@stinson.com)

Brittany Barrientos

[brittany.barrientos@stinson.com](mailto:brittany.barrientos@stinson.com)

Aimee D.G. Davenport

[aimee.davenport@stinson.com](mailto:aimee.davenport@stinson.com)

STINSON





Kelli Deuth  
Anjani Karma  
Olivia Verret



kcalhoon@ramboll.com  
akarna@ramboll.com  
overret@ramboll.com





Brian Hanks  
Ed Jones

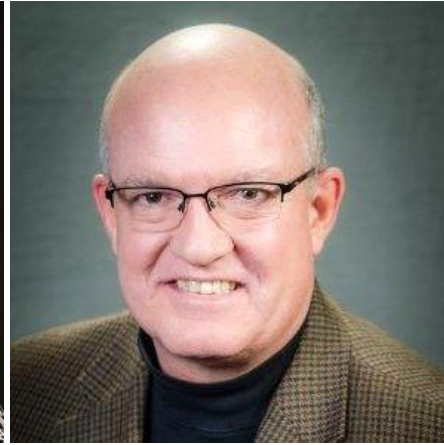


bhanks@ramboll.com  
ehjones@ramboll.com





Environmental  
*Consulting & Facility*  
*Support Services*



Bria Weast

Tammi Hadley

Joe Hitt

Leann McHugh

[bweast@isienvironmental.com](mailto:bweast@isienvironmental.com)

[thadley@isienvironmental.com](mailto:thadley@isienvironmental.com)

[jhitt@iSiEnvironmental.com](mailto:jhitt@iSiEnvironmental.com)

[lmchugh@isienvironmental.com](mailto:lmchugh@isienvironmental.com)









Jonathan Eller

[jonathan.eller@ghd.com](mailto:jonathan.eller@ghd.com)

Travis Kogl

[travis.kogl@ghd.com](mailto:travis.kogl@ghd.com)

Jeff Coon

[jeff.coon@ghd.com](mailto:jeff.coon@ghd.com)

Vel Subramanian

[Vel.Subramanian@ghd.com](mailto:Vel.Subramanian@ghd.com)







Mary Hauner-Davis

[mhauner@burnsmcd.com](mailto:mhauner@burnsmcd.com)

Brian Hoyer

[bhoyer@burnsmcd.com](mailto:bhoyer@burnsmcd.com)

Matt Shanahan

[mshanahan@burnsmcd.com](mailto:mshanahan@burnsmcd.com)

Randall Davis

[rldavis@burnsmcd.com](mailto:rldavis@burnsmcd.com)



A solid teal square containing the text 'HUNTON ANDREWS KURTH' in white, sans-serif, uppercase letters. The text is centered horizontally and vertically within the square.

HUNTON  
ANDREWS KURTH



Matt Leopold  
Brent Rosser



mleopold@hunton.com  
brosser@Hunton.com



**Trinity**  
Consultants





Don Gansert  
Scott Kindy



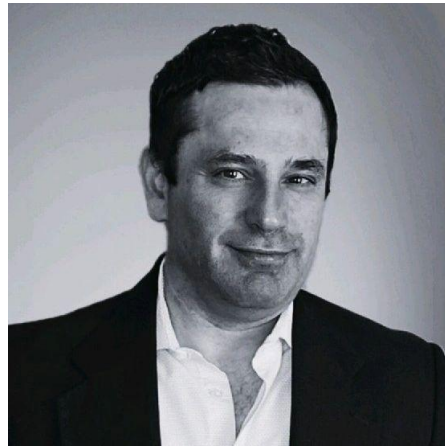
dgansert@trinityconsultants.com  
skindy@trinityconsultants.com





The logo features a stylized landscape on the left, composed of four horizontal layers: a blue sky at the top, a green hillside, a red layer, and a dark brown base. A white vertical bar is positioned to the right of the landscape, partially overlapping the 'T' in the word 'Terracon'.

**Terracon**



James Beilman

[james.beilman@terracon.com](mailto:james.beilman@terracon.com)

Eric Bradley

[eric.bradley@terracon.com](mailto:eric.bradley@terracon.com)

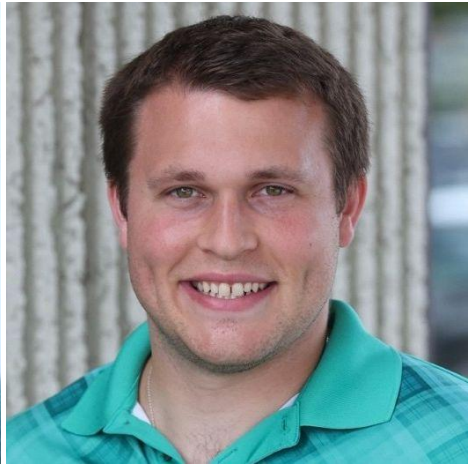
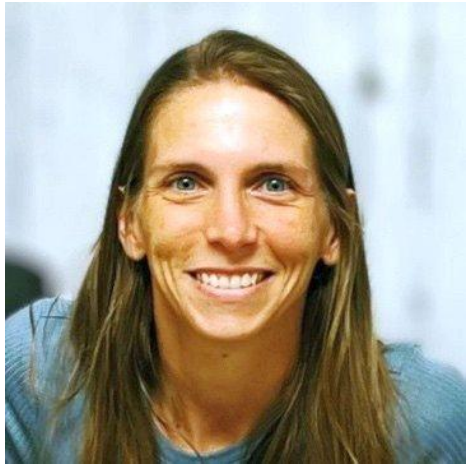
Christian New

[christian.new@terracon.com](mailto:christian.new@terracon.com)

Travis Knisley

[Travis.Knisley@terracon.com](mailto:Travis.Knisley@terracon.com)





Jessica Harbuck

[jessica.harbuck@terracon.com](mailto:jessica.harbuck@terracon.com)

Nate Yencer

[nate.yencer@terracon.com](mailto:nate.yencer@terracon.com)

David Reynolds

[dave.reynolds@terracon.com](mailto:dave.reynolds@terracon.com)

Brian Porter

[Brian.Porter@terracon.com](mailto:Brian.Porter@terracon.com)





Jared Geissler  
Chris Hurst

Jared.Geissler@terracon.com  
chris.hurst@terracon.com



**Lathrop**  
**GPM**





Bill Ford

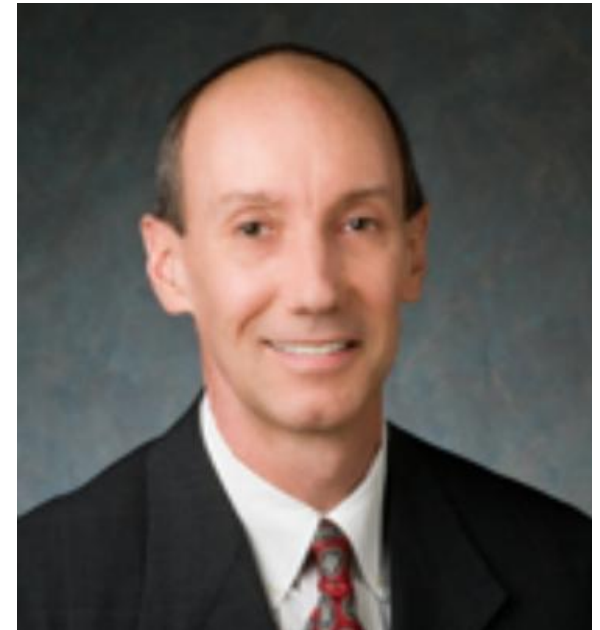


Grant Harse

[bill.ford@Lathropgpm.com](mailto:bill.ford@Lathropgpm.com)

[grant.harse@lathropgpm.com](mailto:grant.harse@lathropgpm.com)

Bob Lambrechts



[bob.lambrechts@lathropgpm.com](mailto:bob.lambrechts@lathropgpm.com)





Maddie Eschelman  
Fiona Madden

[maddie.eshelman@Lathropgpm.com](mailto:maddie.eshelman@Lathropgpm.com)  
[fiona.madden@lathropgpm.com](mailto:fiona.madden@lathropgpm.com)





**Stanley Consultants**





Collin Slattery

Tyler Marshall

Melissa Tiedemann

[SlatteryCollin@stanleygroup.com](mailto:SlatteryCollin@stanleygroup.com)

[MarshallTyler@stanleygroup.com](mailto:MarshallTyler@stanleygroup.com)

[tiedemannmelissa@stanleygroup.com](mailto:tiedemannmelissa@stanleygroup.com)







Joe Tell  
Joseph Kunes



jtell@goktl.com  
jckunes@goktl.com







Adam Troutwine  
Stacy Stotts  
Jacob Levin

[atroutwine@polsinelli.com](mailto:atroutwine@polsinelli.com)  
[sstotts@polsinelli.com](mailto:sstotts@polsinelli.com)  
[jlevin@polsinelli.com](mailto:jlevin@polsinelli.com)





THOMPSON  
COBURN LLP



Ryan Russell Kemper      rkemper@thompsoncoburn.com



# Geosyntec

consultants

engineers | scientists | innovators





Hannah McIntyre

[hannah.mcintyre@geosyntec.com](mailto:hannah.mcintyre@geosyntec.com)

Ken Yass

[kyass@geosyntec.com](mailto:kyass@geosyntec.com)

**Geosyntec**   
consultants

## **Questions for Speakers?**

**Text your questions now to:**

**Kevin Perry (573) 680-5069**

**Roger Walker (573) 415-7699**