

Environmental Site Tracking And Research Tool (E-START)

**Midwest Environmental Compliance
Conference**

April 11, 2018

Donald Cripe, MoDNR, HWP, LTS

Why make an Online Map?

- Records for thousands of sites that have been investigated or remediated
- Tracking risk-based remediation: clean-up to level appropriate for future use
- Prevent disturbance of material left in place
- Missouri Environmental Covenants Act



MISSOURI
DEPARTMENT OF
NATURAL RESOURCES



06/26/2012

- Soil Management Plan
- Non-Residential
- No Excavation without Approval
- No Drilling or Use of Groundwater
- I&M of engineered controls
(parking lot as cap)

Missouri Environmental Covenants Act

1. MoECA creates a uniform standard for environmental covenants, and

*Missouri Revised Statutes at sections 260.1000 to 260.1039,
RSMo. and effective January 1, 2008*

Missouri Environmental Covenants Act

2. MoECA requires a readily accessible database of sites with known contamination distinguished by at least three categories of sites contaminated with hazardous substances:

- Active
- Restricted Use
- Completed with no restrictions



MISSOURI
DEPARTMENT OF
NATURAL RESOURCES

Missouri Environmental Site Tracking And Research Tool (Missouri E-START)

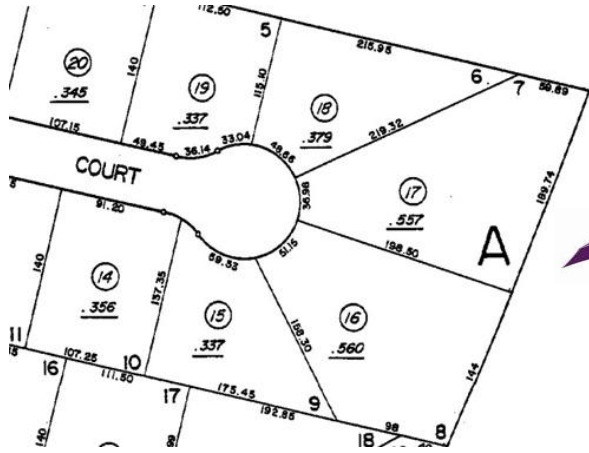


Map Users

- Members of the Public
- Environmental Consultants
- Local Planning Agencies
- Transportation Agencies
- Utilities
- Real Estate Professionals
- Construction Companies
- Bankers

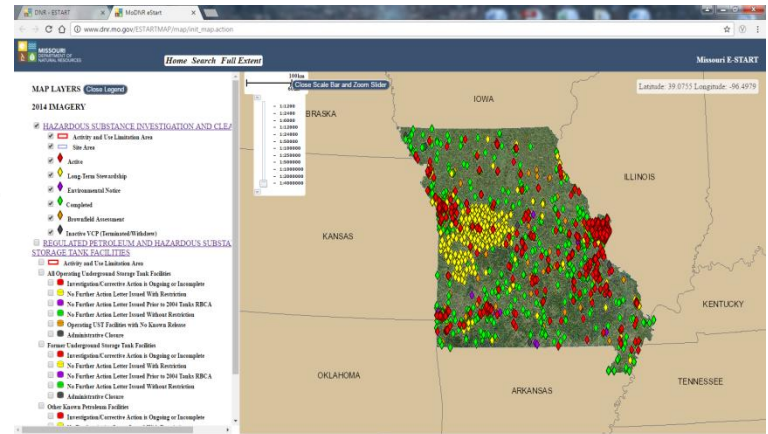


LOCATIONAL DATA



DNR FACILITY FILES

ESTART MAP



To report a problem with information about a site location, please contact us at LT@dnr.mo.gov, (573) 526-8913, or (800) 361-4827.



Hazardous Waste Program

Site data for map

SMARS DATABASE

3,507 Sites for Map

***2,007 VCP
732 BA Sites
214 Inactive Sites***

***616 Federal Facilities
883 Superfund
1 US EPA Lead***







PERMITS SECTION TRACKING TABLES

103 Sites for Map








TANKS SECTION DATABASE

***15,000+ Facilities for
Map***

Hazardous Substance Investigation and Cleanup Sites

-  **Active**
-  **Long-Term Stewardship**
-  **Environmental Notice**
-  **Completed**
-  **Brownfield Assessment**
-  **Inactive VCP (Terminated / Withdrew)**

Tank Facility Categories

-  Investigation/Corrective Action is Ongoing or Incomplete
-  No Further Action Letter Issued with Restriction
-  No Further Action Letter Issued Prior to 2004 Tanks RBCA
-  No Further Action Letter Issued Without Restrictions
-  Operating UST Facilities with No Known Release
-  Other Reported Petroleum Facilities with No Known Release
-  Administrative Closure



MISSOURI
DEPARTMENT OF
NATURAL RESOURCES



www.dnr.mo.gov/ESTART



Missouri E-START



The Missouri Department of Natural Resources' Hazardous Waste Program regulates the management of hazardous waste, oversees the cleanup of contamination, regulates the operation of underground tanks, and oversees removal and cleanup of petroleum storage tanks.

This interactive map allows users to readily access information on site investigations and cleanups, as well as certain regulated sites within a specific community or area. The map contains information about the following types of sites: Superfund sites, Federal Facilities sites, Resource Conservation and Recovery Act Corrective Action sites, Brownfields/Voluntary Cleanup Program sites, Brownfield Assessments, and Petroleum and Hazardous Substance Storage Tank Facilities.

Users may click on a point or area to review a site information summary, and links to important documents from department files are available. Local governments and utilities are encouraged to utilize the downloadable data layers to assist in permitting,

planning and development activities.

Most environmental cleanups are risk-based, which means the site is cleaned up to a level sufficient for its likely future use. Such cleanups may include physical controls, like barriers and caps, or restrictions on future use of the property to prevent exposure to residual contamination. This map is designed to provide information about all clean ups and any related physical controls or property use restrictions. The department's goal in making site information easily accessible is to provide a transparent, consistent information resource that helps ensure property is used safely in Missouri. If additional data is required, the department's files can be reviewed or copied by making a Sunshine Law request. Contact the Custodian of Records at custodianofrecord@dnr.mo.gov or call 573-751-3443 or visit dnr.mo.gov/sunshinerequests.htm for more information.

Although these data sets have been compiled by the department, no warranty, expressed or implied, is made by the department as to the accuracy of the data and related materials. The act of distribution shall not constitute any such warranty, and no responsibility is assumed by the department in the use of these data or related materials.

Any user of this map or related data sets accepts any faults or limitations with the data and agrees to hold the state of Missouri harmless from and against any damage, loss or liability arising from the use of this map or related data sets. By clicking "View Map" or "Download Data," you acknowledge and accept these terms.

[View Map](#)
[Download Data and Reference Guide](#)
[Hazardous Waste Homepage](#)
[Program Home Page](#)
[Businesses, Schools and Public Organizations](#)
[Cleanup](#)
[Data Downloads](#)
[Electronic Recycling](#)
[Guidance and Information](#)
[Hazardous Waste Forum](#)
[Hazardous Waste Management Commission](#)
[Laws and Regulations](#)
[Map Gallery](#)
[Missouri Risk-Based Corrective Action \(MRBCA\)](#)
[Permitting, Certification and Licenses](#)
[Public Participation](#)
[Radioactive Material Shipments](#)

Contact Information

Hazardous Waste Program

P.O. Box 176
Jefferson City, MO 65102
800-361-4827
573-751-3176

[Contact Us](#)
[Report an Environmental Concern](#)



Browser tabs: DNR Time Reporting Syst..., DNR Content Manager, Test ESTART, Test Mobile ESTART, SharePoint E-START Map ..., DNR Intranet Employee I..., Approved Standards for In..., DNR-Dec-2015-dashboard

Address bar: https://dnr.mo.gov/ESTART/referenceguide.htm

Navigation: MO.gov, Gov. Eric Greitens, Find an Agency, Online Services, Search

Social: YouTube, Follow Us



Programs ▾

Forms and Permits

Publications

Laws and Regulations

Online Services

Calendar of Events

E-START Reference Guide

Description	General Information	Google Earth Data Download	ESRI Data Download	CSV Format Data Download
Hazardous Waste Cleanup Sites	Hazardous Substance Reference Guide	KMZ file	Layer Package	CSV
Tank Site/Facilities	Tanks Facility Reference Guide	KMZ file	Layer Package	CSV
Tank Site/Facilities (Unmapped)				CSV

- Program Home Page
- Businesses, Schools and Public Organizations
- Cleanup
- Data Downloads
- Electronic Recycling
- Guidance and Information
- Hazardous Waste Forum
- Hazardous Waste Management Commission
- Laws and Regulations
- Map Gallery
- Missouri Risk-Based Corrective Action (MRBCA)
- Permitting, Certification and Licenses
- Public Participation
- Radioactive Material Shipments

Contact Information



Browser address bar: http://www.dnr.mo.gov/ESTARTMAP/map/init_map

Navigation: Home Search Full Extent

Map Title: Missouri E-START

Scale Bar: 100km

Close Scale Bar and Zoom Slider

MAP LAYERS Close Legend

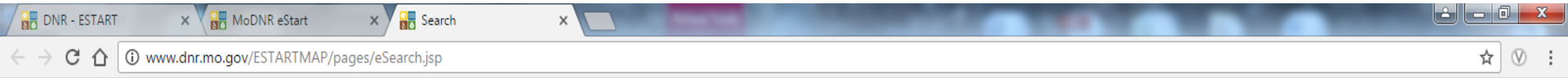
2014 IMAGERY

- HAZARDOUS SUBSTANCE INVESTIGATION**
 - Activity and Use Limitation Area
 - Site Area
 - Active
 - Long-Term Stewardship
 - Environmental Notice
 - Completed
 - Brownfield Assessment
 - Inactive VCP (Terminated/Withdrawn)
- REGULATED PETROLEUM AND HAZARD STORAGE TANK FACILITIES**
 - Activity and Use Limitation Area
 - All Operating Underground Storage Tank Facilities**
 - Investigation/Corrective Action is Ongoing or Inc
 - No Further Action Letter Issued With Restriction
 - No Further Action Letter Issued Prior to 2004 Ta
 - No Further Action Letter Issued Without Restrict
 - Operating UST Facilities with No Known Release
 - Administrative Closure
 - Former Underground Storage Tank Facilities**
 - Investigation/Corrective Action is Ongoing or Inc
 - No Further Action Letter Issued With Restriction
 - No Further Action Letter Issued Prior to 2004 Ta
 - No Further Action Letter Issued Without Restrict
 - Administrative Closure

Map showing Missouri and surrounding states: IOWA, KANSAS, OKLAHOMA, ARKANSAS, ILLINOIS, KENTUCKY, TENNESSEE.

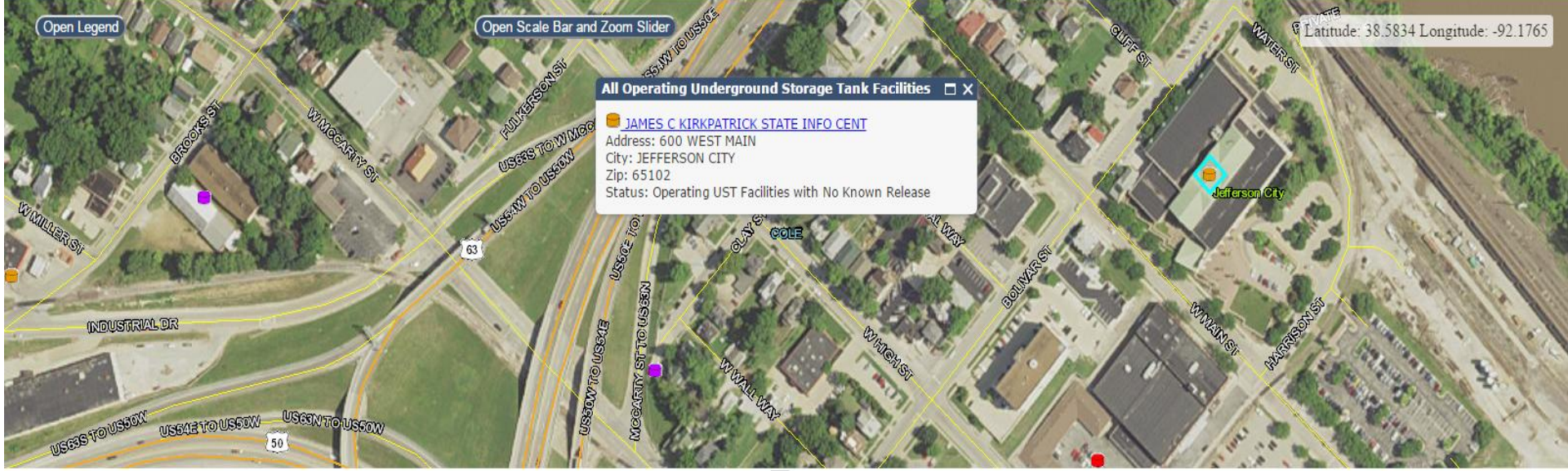


MISSOURI DEPARTMENT OF NATURAL RESOURCES



Address	<input type="text" value="Street and City or Zip"/>	City	<input type="text" value="--Zoom to City--"/>
County	<input type="text" value="--Zoom to County--"/>		
Zip	<input type="text" value="--Zoom to Zip Code--"/>		
Site/Facility Name	<input type="text" value="--Zoom to Site--"/>	<input type="button" value="Zoom"/>	

To report a problem with information about a site location, please contact us at LTS@dnr.mo.gov, (573) 526-8913, or (800) 361-4827.




Close Table Sites Currently Displayed on Map Export to CSV

Site/Facility Name	Address	City	County	Status	Site/facility owner
CONVENIENT FOOD MART #1 CONOCO	426 BROOKS ST	JEFFERSON CITY	COLE	Operating UST Facilities with No Known Release	DNR/Hazardous Waste Program/Tanks Section
DELONG'S INC - CULVERT	BROOKS AND E MILLER	JEFFERSON CITY	COLE	No Further Action Letter Issued Prior to 2004 Tan	DNR/Hazardous Waste Program/Tanks Section
JAMES C KIRKPATRICK STATE INFO CENT	600 WEST MAIN	JEFFERSON CITY	COLE	Operating UST Facilities with No Known Release	DNR/Hazardous Waste Program/Tanks Section
JOE MAGRUDER 66	CLAY AND MCCARTY ST	JEFFERSON CITY	COLE	No Further Action Letter Issued Prior to 2004 Tan	DNR/Hazardous Waste Program/Tanks Section
MO DEPT OF TRANSPORTATION	200 HARRISON ST	JEFFERSON CITY	COLE	Investigation/Corrective Action is Ongoing or Incc	DNR/Hazardous Waste Program/Tanks Section



Site/Facility Summary

Site Map

 Operating UST Facilities with No Known Release



FACILITY INFORMATION

Facility Identification Number	ST0020233
Facility Name	JAMES C KIRKPATRICK STATE INFO CENT
Address	600 WEST MAIN
City	JEFFERSON CITY
ZIP	65102
County	COLE
Facility Type	All Operating Underground Storage Tank Facilities
Status	Operating UST Facilities with No Known Release
Summary	An operating UST facility as defined by Section 319.100 RSMo is located at this location. The Department of Natural Resources is not aware of a release from this facility.
Lead Regulatory Agency	DNR/Hazardous Waste Program/Tanks Section

[Click here to download a PDF for this site](#)



MISSOURI
DEPARTMENT OF
NATURAL RESOURCES



Missouri
Department of
Natural Resources

Missouri E-START Site/Facility Summary

This is an advisory about environmental conditions that could affect use of the property identified on the map below. Any property use limitations are intended to ensure safe use of the property after the cleanup of contamination in the soil and/or groundwater. This advisory identifies the governmental agencies that oversaw the sites cleanup, and provides contacts for further information.

Although this map and its underlying data sets have been compiled by the Missouri Department of Natural Resources (Department), no warranty, expressed or implied, is made by the Department as to the accuracy of the data and related materials. The act of distribution shall not constitute any such warranty, and no responsibility is assumed by the Department in the use of these data or related materials.

SITE MAP



 Investigation/Corrective Action is Ongoing or Incomplete

Facility Identification Number ST0011917

Release Identification Number(s) R002265 Active

Site/Facility Name MO DEPT OF TRANSPORTATION

Address 200 HARRISON ST

City JEFFERSON CITY

Zip 65101

County COLE

Facility Type Former Underground Storage Tank Facilities

Status Investigation/Corrective Action is Ongoing or Incomplete

Summary A petroleum or hazardous substance release is currently being addressed under the Missouri Risk-Based Corrective Action Guidance for Petroleum Storage Tanks. Please review the Department of Natural Resources site file for more information.

Lead Regulatory Agency DNR/Hazardous Waste Program/Tanks Section

Contact Information Long-Term Stewardship Unit

To report a problem with information about a site location, please contact us at LTS@dnr.mo.gov, (573) 526-8913, or (800) 361-4827.

Future Projects



Don Cripe, Chief
Long-Term Stewardship Unit
Hazardous Waste Program
Missouri Department of Natural Resources

573-522-6774

don.cripe@dnr.mo.gov

Map Link

www.dnr.mo.gov/ESTART